

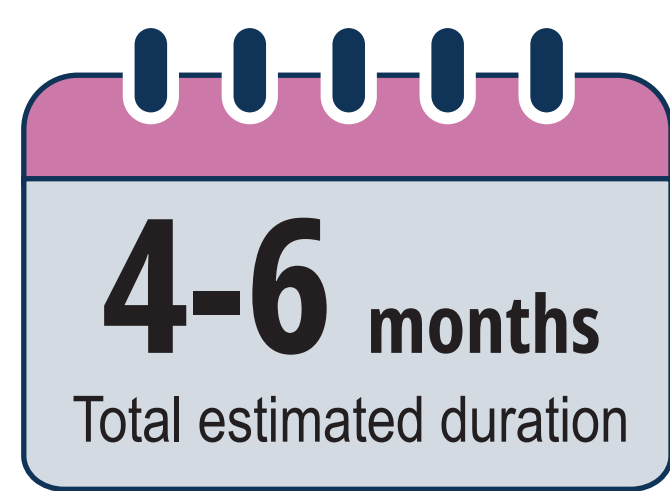


# Area 7: Montrose Ave

## Description of Work

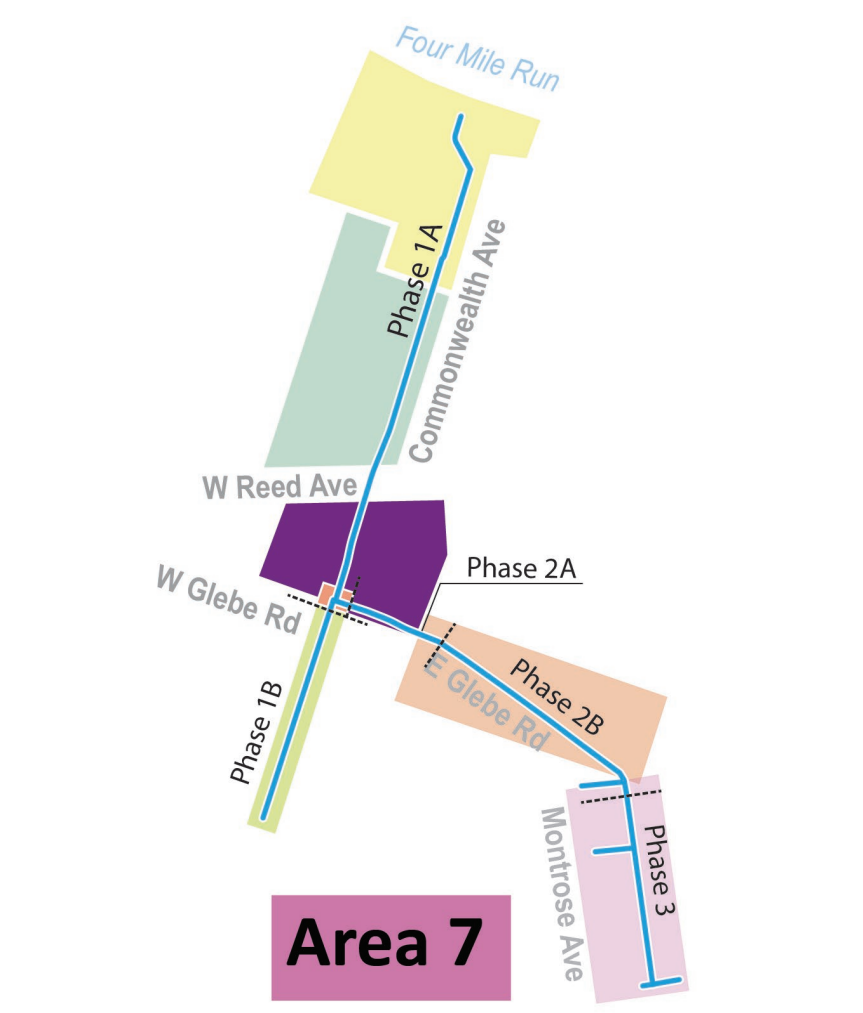
- ▶ Ashby St – new curb inlets and pipes (30" and 18" reinforced concrete pipes) will be installed to direct stormwater off the road
- ▶ Montrose Ave (east side) – a 48" reinforced concrete pipe will replace an existing 24-inch pipe
- ▶ LaVerne Ave (at Clifford Ave) and Hume Ave – new pipe and inlets will be installed to capture stormwater flows and direct them to the new 48" pipe

## Estimated Duration of Construction



### LEGEND

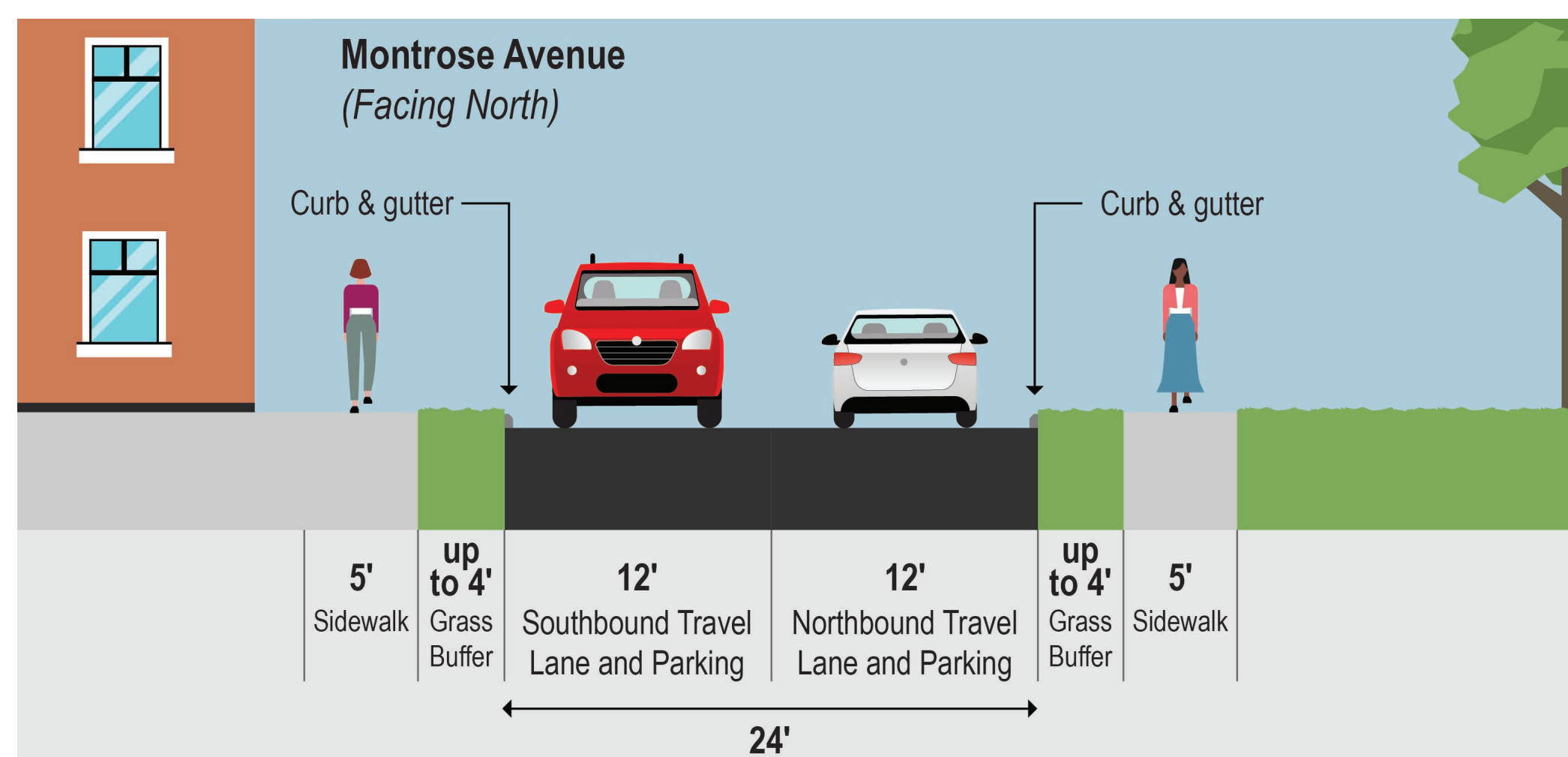
- Proposed Storm Sewer
- Area 7 Boundary
- Construction Area



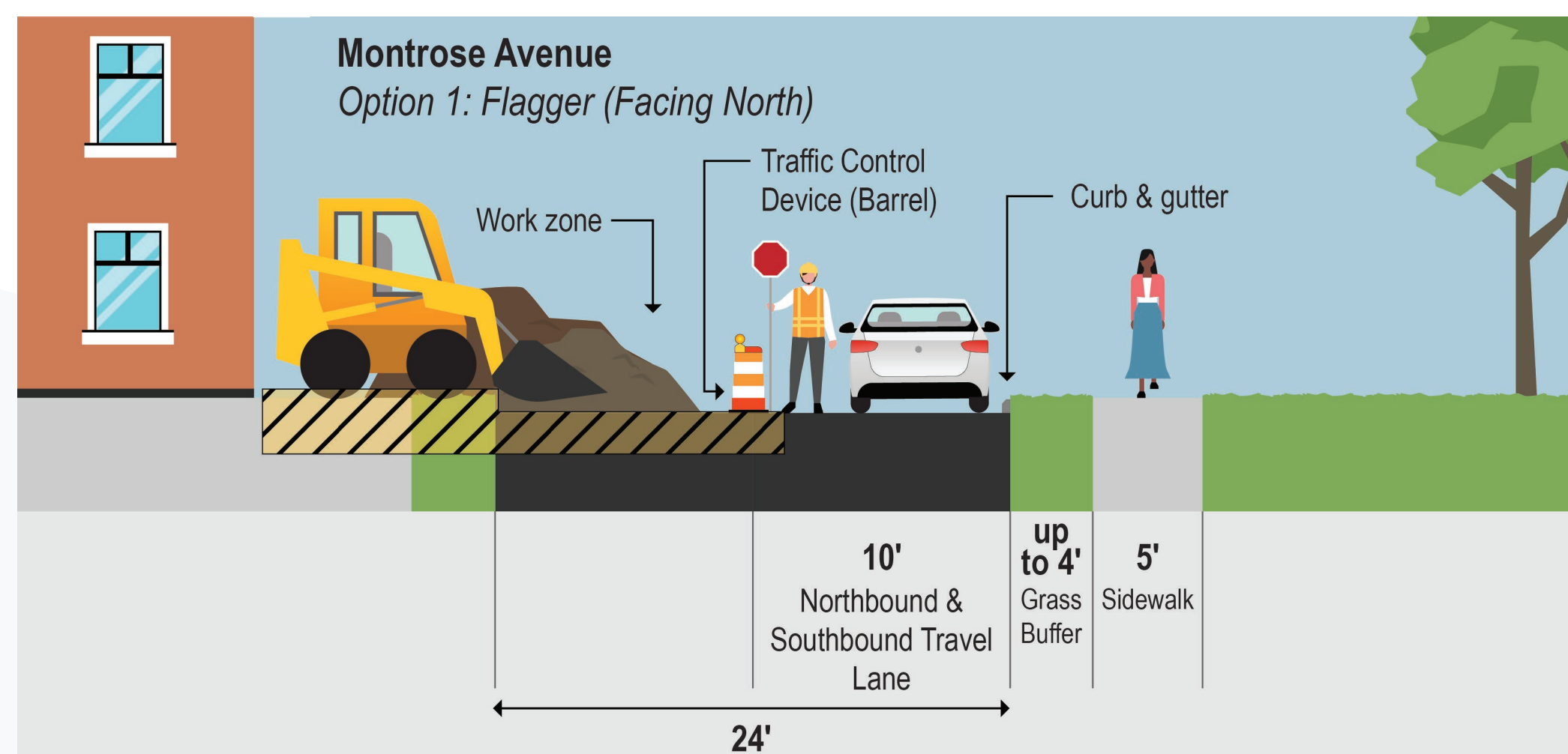
## Traffic Management During Construction

- ▶ Two-way vehicle traffic will be maintained using flaggers with construction moving block-by-block
- ▶ Traffic destined for Ashby St will be detoured using E Glebe Rd to Montrose Ave during installation of the junction box
- ▶ Bike lanes will be closed; bikes and vehicles will share the lane

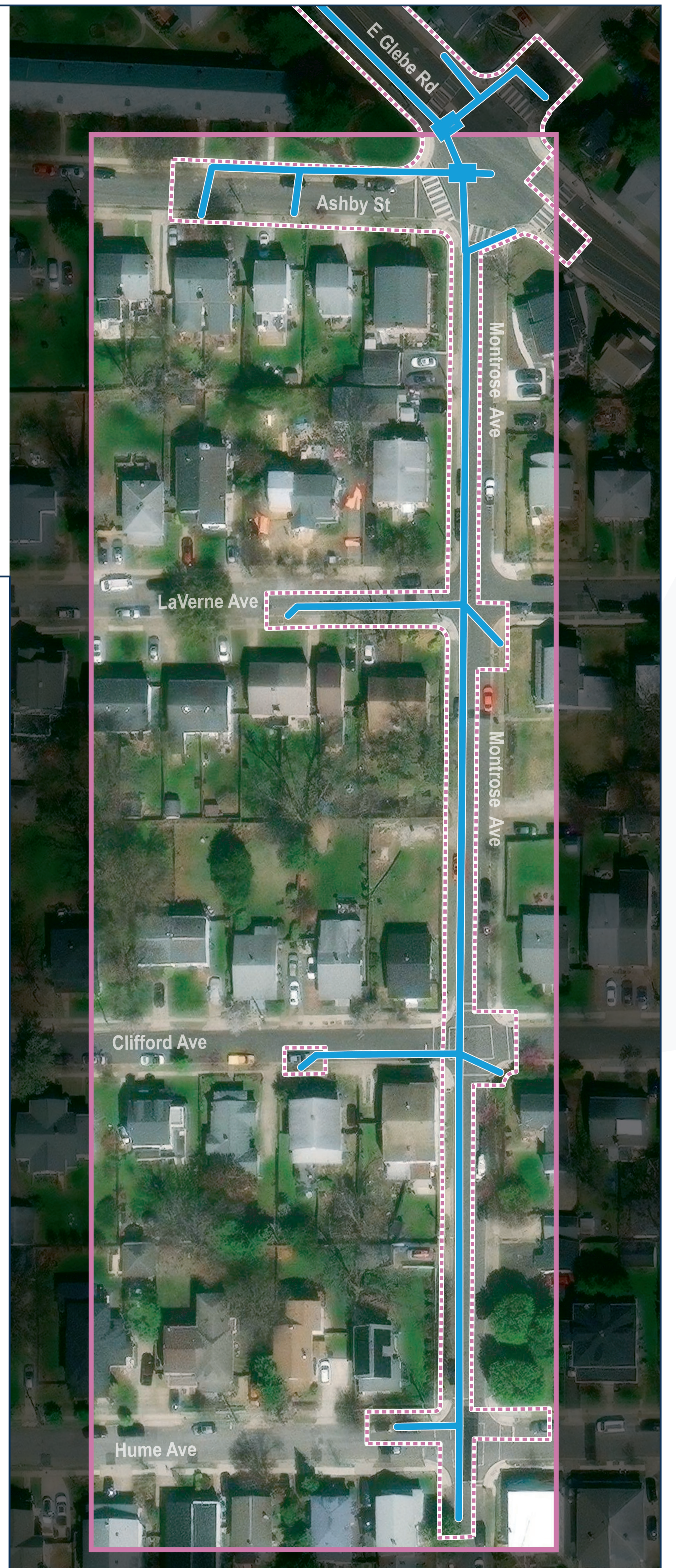
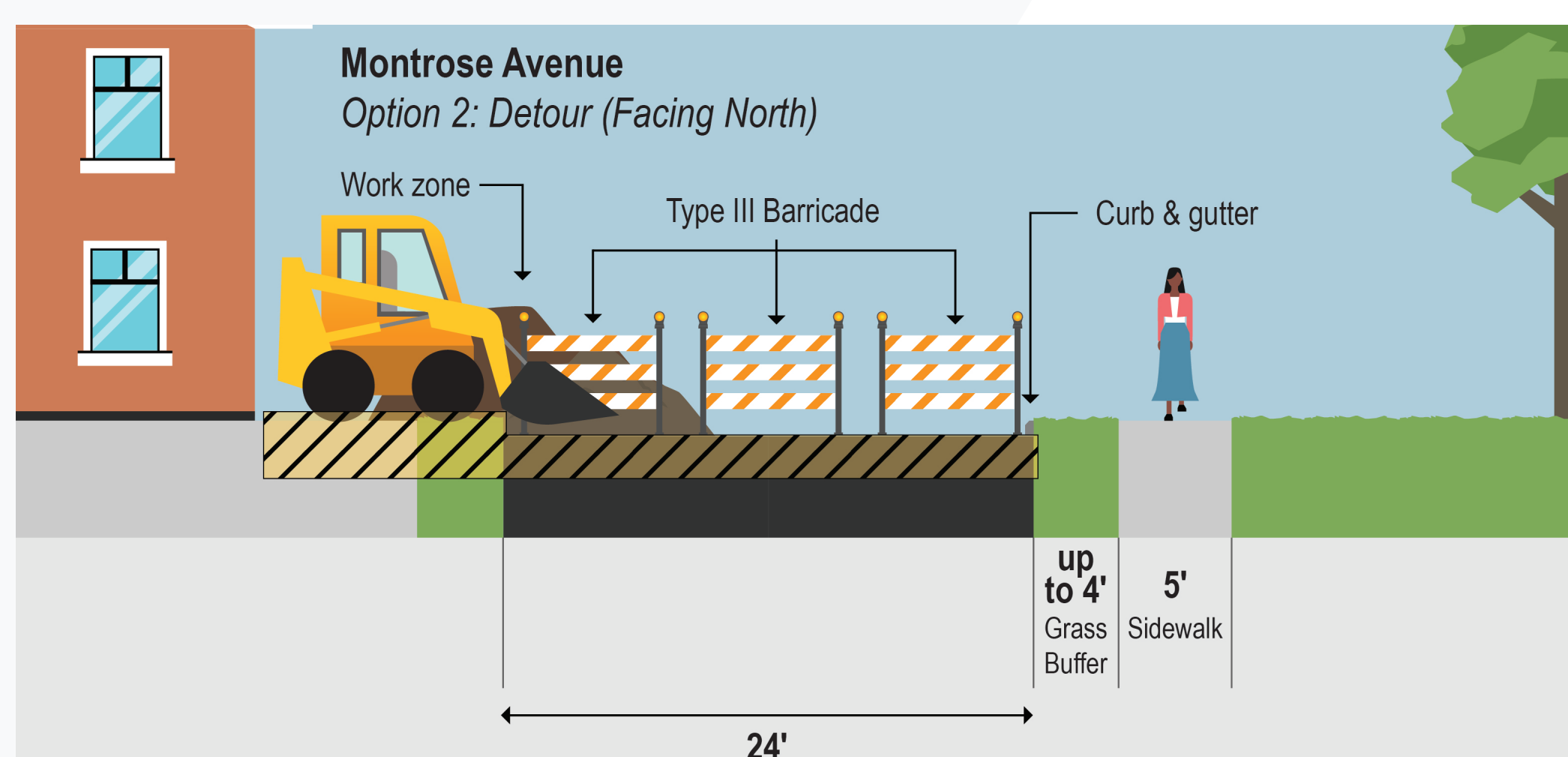
### Travel Lanes Now



### Travel Lanes During Construction (Flagger)



### Travel Lanes During Construction (Detour)



## Construction Impacts

- Street parking** – no parking in the construction areas on Ashby St, Montrose Ave, and crossing streets
- Vehicles and Bicycles on Road** – will be detoured one block at a time
- Access to residential driveways** – will be maintained
- Pedestrians** – sidewalk on the east side of Montrose Ave will remain open